

Our vision

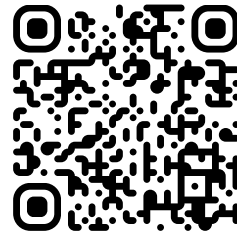
NOVI's on-board computing and low-cost multi-sensor satellite systems form the foundation for our vision of proliferating compute capabilities at the space "edge" and democratizing access to geo-intelligence.

We aim to enable the broader space industry with NOVI's low-cost, space-rated, high-performance computing systems, while also driving the rapid adoption and utilization of space-based data and intelligence across all industry verticals with GENIE, our open-access, multi-modal smart satellite constellation and platform.

The company has multiple operational in-space systems and is launching the first two satellites of the GENIE initial operating constellation in the first half of 2026.

Founded in 2017, NOVI is focused on enabling the transition from Earth Observation (EO) to near real-time Earth Monitoring (EM) and Geospatial Intelligence (GI) through the implementation of on-board edge computing and artificial intelligence.

The NOVI team is based in Arlington, VA outside of DC, and has deep domain knowledge, core competencies, and expertise in the full satellite life-cycle including: mission CONOPS, requirements development, integrated spacecraft design, hardware fabrication and procurement, AI&T, launch and regulatory licensing, and in-space mission operations.



moreinfo@novispace.ai
novispace.ai

Arlington, VA 22206

Equipment described herein may fall under the U.S. Export Administration Regulations and may be subject to licensing requirements under either the ITAR or the EAR.

©2026 NOVI Space, Inc. All rights reserved.



SP360 RAD-HARD ON-BOARD COMPUTER

ENABLING COMPUTING AT THE SPACE EDGE

SP360 Rad-Hard On-Board Computer

Featuring a state-of-the-art AMD Versal adaptive SoC, NOVI's AI-enabled SP360 OBC is a highly-optimized edge processor that offers un-paralleled machine-learning performance in a power efficient form factor. It is capable of operating all sizes of payloads and satellite missions.

The AMD Versal is a high-performance heterogenous compute platform with application and real-time processing cores, AI engines for ML based workflows, and programmable logic for flexible I/O. Latch-up (SEL) immunity and robust upset (SEU) mitigation make it ideal for the space radiation environment.

NOVI's SP360 OBC also features a radiation-hardened Vorago MCU which performs system monitoring and SEU mitigation functions. It can also be used as an ultra-low-power processing option for other spacecraft systems.

NOVI's SP240 OBC reached TRL 9 in January 2025



Performance

AMD/Xilinx Versal (AI Edge Series)

- » Application Processor: Dual-core ARM® Cortex®-A72
- » Real-time Processor: Dual-core ARM® Cortex®-R5F
- » Programmable Logic (FPGA)
- » AI Engines: High-performance parallel compute cores
- » 100 TOPS ML performance
- » 16 GB DDR4

Vorago ARM MCU

- » Low-power ARM® Cortex®-M4
- » Embedded rad-hard FRAM

Software Support

AMD/Xilinx Versal

- » Embedded Linux

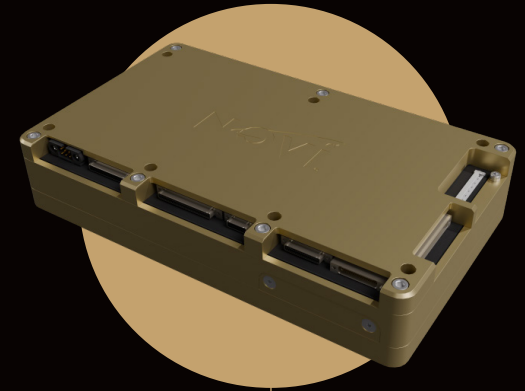
Vorago ARM MCU

- » FreeRTOS™

Flexible IO

Highly customizable and reconfigurable with:

- » GPIO (UART, CAN, I2C, SPI, etc.)
- » RS-422 (Bidirectional and Unidirectional)
- » Multiple 1G ethernet interfaces
- » 10G/25G/40G/100G ethernet
- » High-speed serial (PCIe, JESD204B, SLVS-EC, SpaceWire, etc.)
- » High-speed parallel interfaces (LVDS, MIPI, etc.)
- » Analog inputs and outputs
- » USB 2.0
- » M.2 NVMe



SP360 OBC

Radiation Tolerance

- » Radiation-hardened Vorago ARM MCU
- » SEL immune Xilinx processor
- » Built in SEU/SEFI mitigation
- » All supporting ICs are radiation-hardened
- » ECC protection on all memory interfaces
- » Redundant storage for boot images and data
- » Optional rad-tolerant NVMe

Power

- » Single wide input range power supply (5-18V)
- » Low-power mode: <750 mW
- » High-performance modes: 5-100W (application dependent)

Mechanical

- » Housing Dimensions: 96 mm x 156 mm x 25 mm
- » Mounting: Through holes for screw mounting to chassis
- » Customizable mounting options and form factor